

Permanent License Transfer:

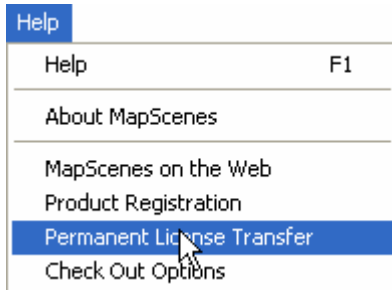
This process will permanently remove your license from an old computer and move it to a new computer. There are three steps which must be followed exactly. You will need:

- a demo copy of Mapscenes 2006 installed on the new computer
- a floppy disk, USB Memory Device or an empty folder in a network location that can be accessed by both computers to transfer the license
- Mapscenes running on the old computer
- Mapscenes running on the new computer in Demo mode

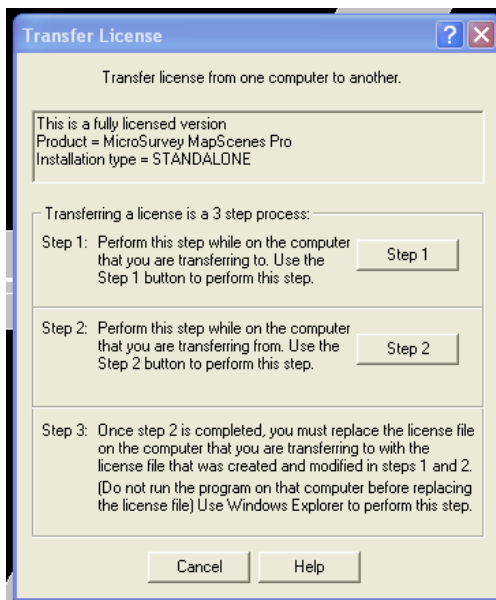
**if you are using a floppy disk or USB Memory Device ensure that they are not write protected before you begin.*

Getting Started:

Select "Permanent License Transfer" on both computers as shown:



Select the appropriate step:



Step One on the New Computer:

NOTE

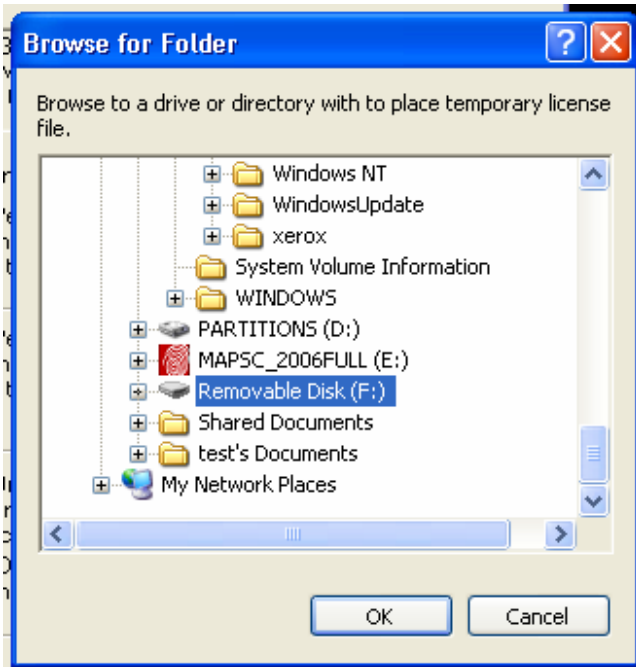
If you are using a movable memory device to transfer the license, ensure that it is connected to the new computer now.

If you are using a network location to transfer the license, it is a good idea to quickly test it for permissions before you begin. You can perform this test by creating a new text document in the folder you intend to place the license. Add some text and save it from the new computer. Then go to the old computer, open the document and modify the text. See if you are able to save the changes. If this process triggers any error messages you may wish to choose a different location or obtain assistance from your network administrator.

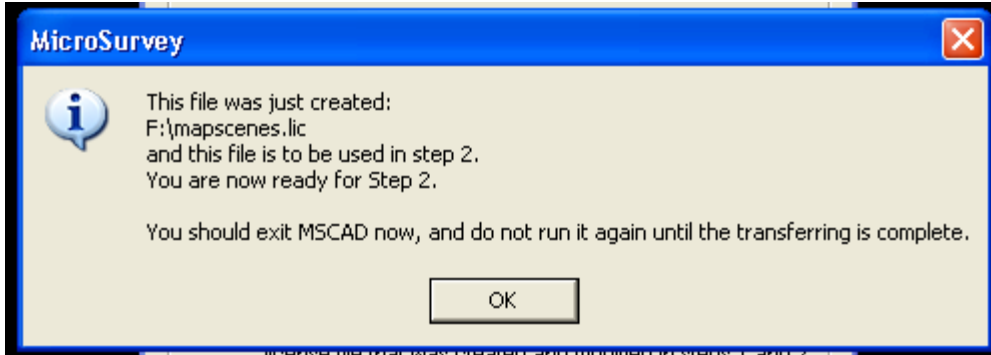
Step 1

After selecting "Step 1" you will be prompted to browse to a location where you can temporarily place the license file. This must be a location which both computers can access. I am using a removable USB Memory Device in this example.

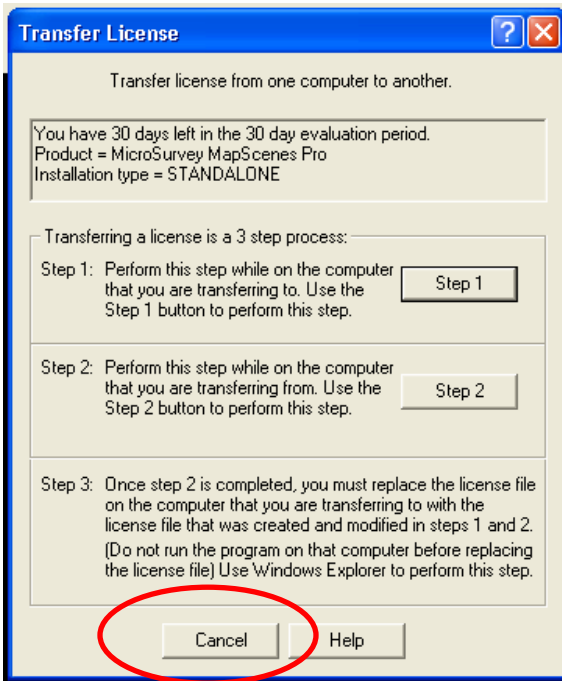
Single click on the location and select "OK"



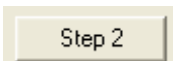
You should next see the message below. Follow the instructions.



It is important to exit Mapscenes and *not run it again* until step 3 has been completed. Click on “Cancel” as shown below and then exit the program.

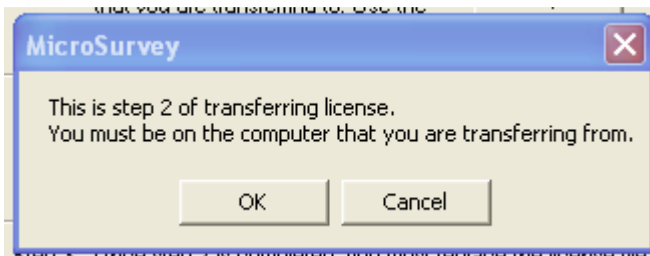


Step Two on the Old Computer:

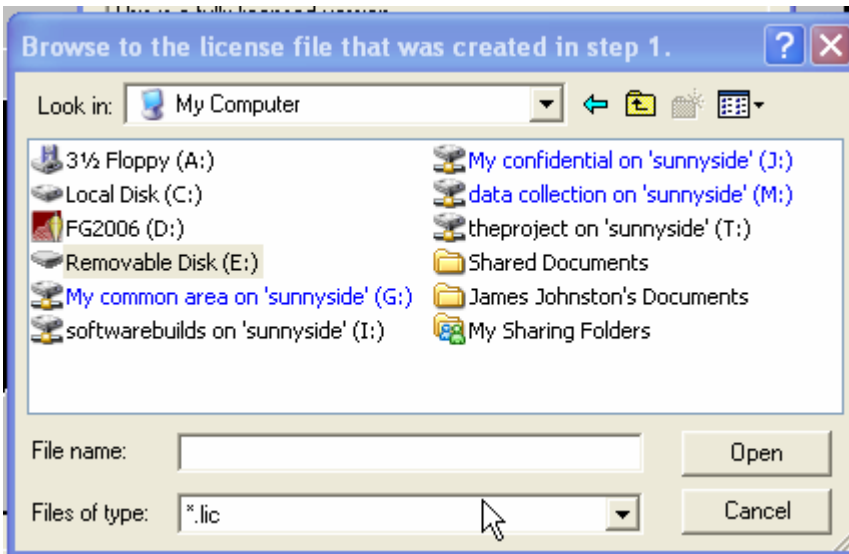
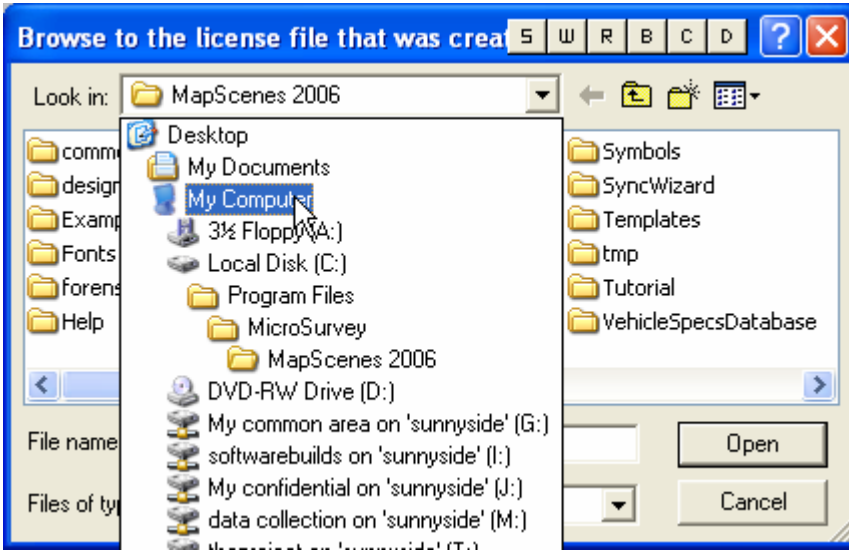


Step 2 will move your license file and disable the copy of Mapscenes running on the old computer.

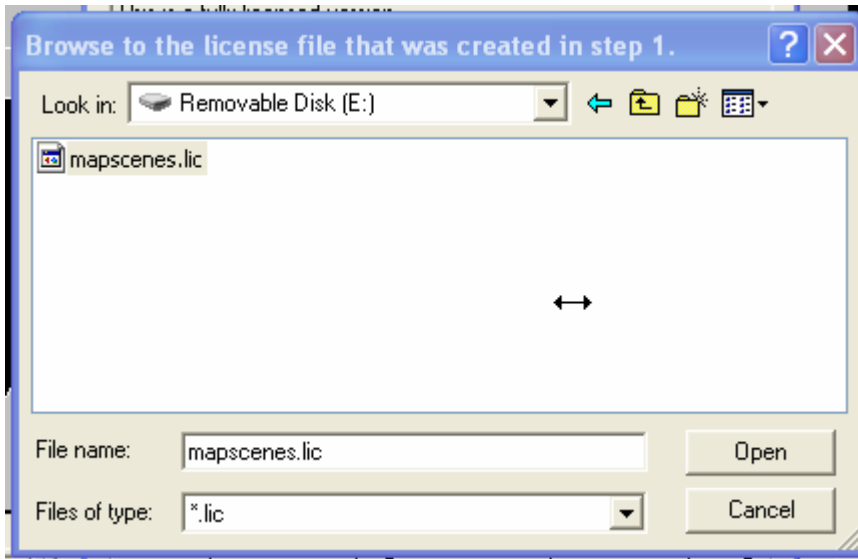
Remove your USB Memory Device from the new computer and plug it into the old computer. After selecting the “Step 2” button you will see the message below. Confirm that you are on the old computer by clicking “OK.”



You will be prompted to browse to the USB Memory Device (or floppy or network location) where the temporary license is now stored.

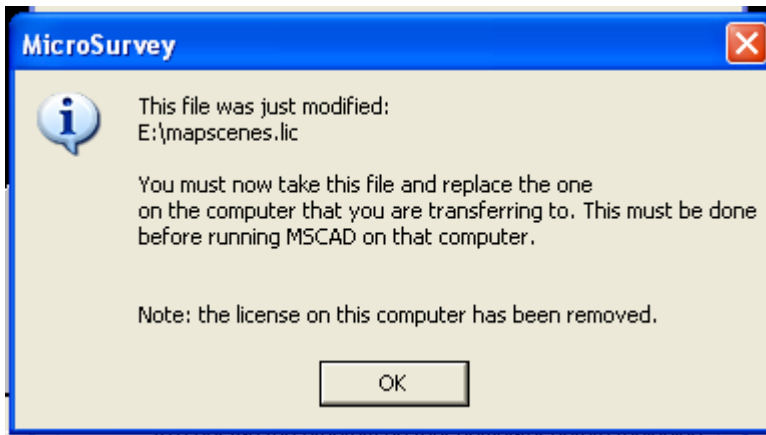


Double click on the temporary license file:



** if you receive a message that the file was not written it may indicate that the USB device or floppy is write protected. Change the write protect feature and try again.*

You will receive the message:

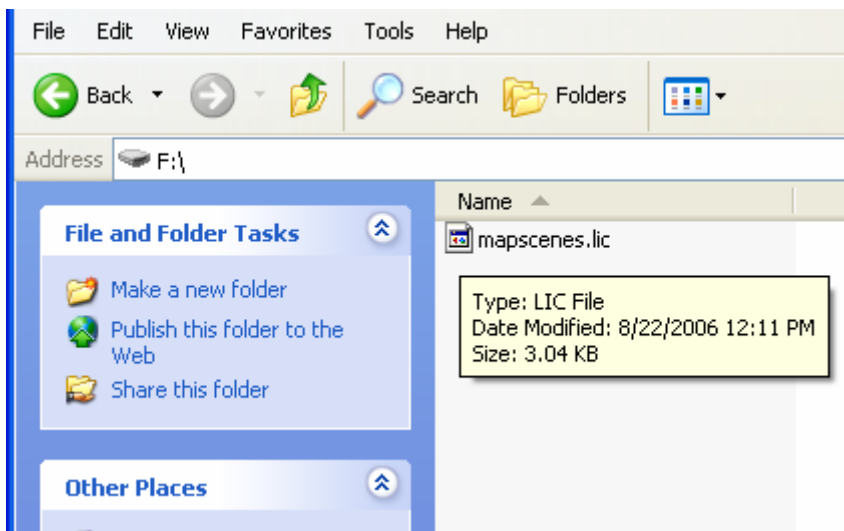
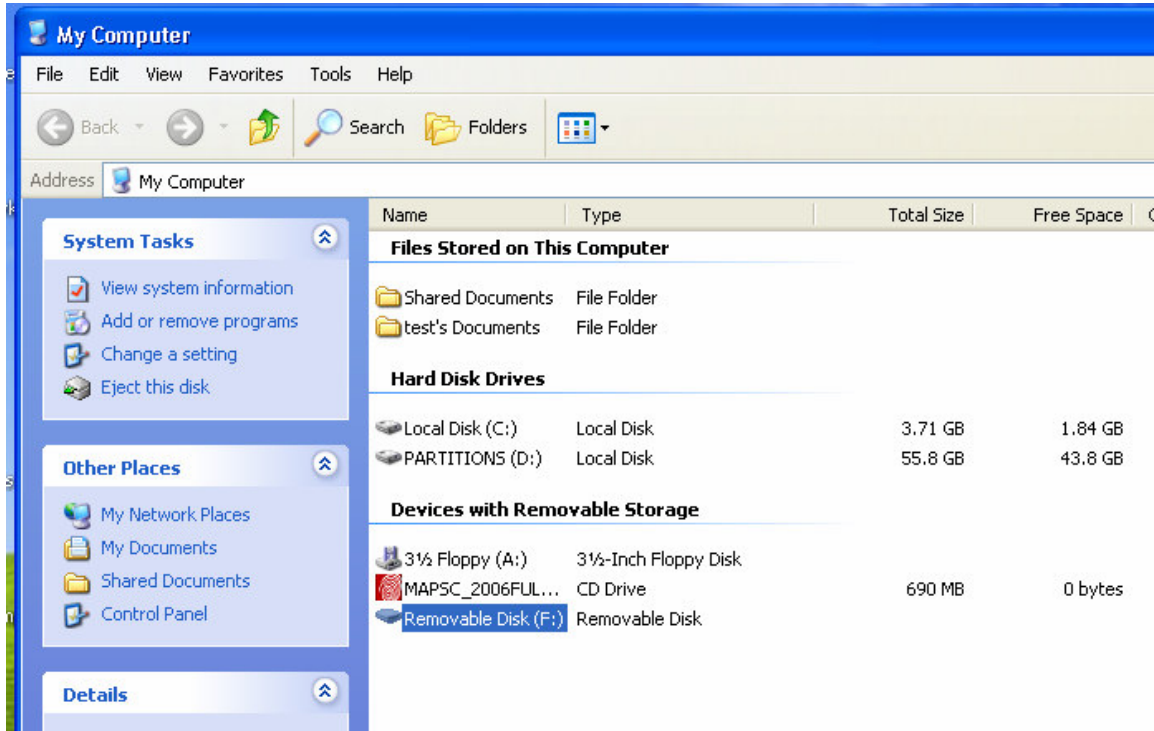


Select "OK" and remove your USB Memory Device (or floppy) from the old computer. Mapscenes is now disabled on this computer and can be removed. Be sure to transfer your forensic folder and any other folders which might contain old scenes to the new computer. If you have customized any symbols you will want to replace the Symbols folder on the new computer with the one from the old computer.

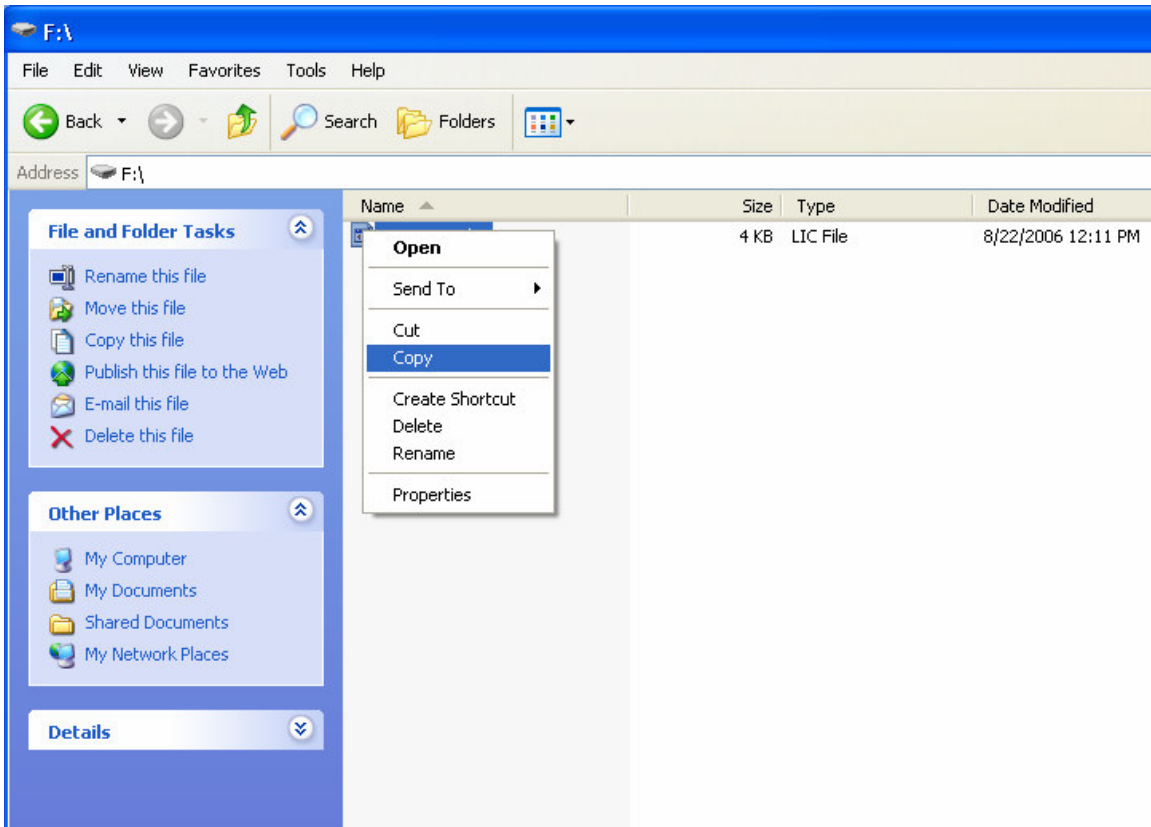
Step Three: Transferring the License

Step 3 is to be performed on the new computer. It *must* be completed before you attempt to run Mapscenes.

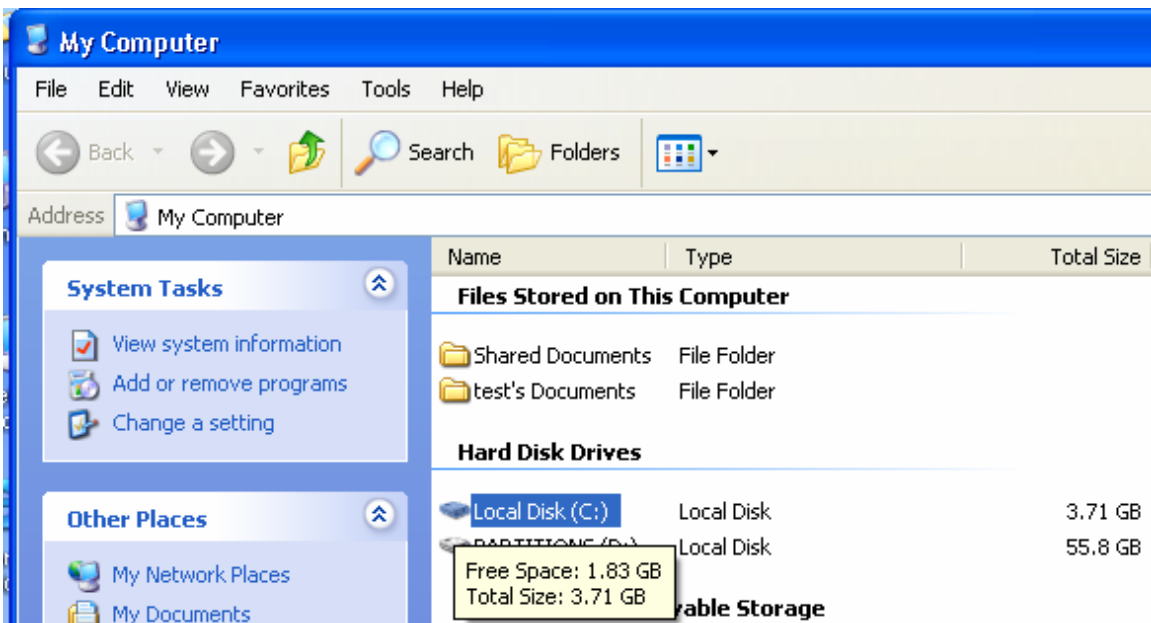
Insert the USB Memory Device or floppy in the same location you used during Step 1. Open up “My Computer” and browse to the location of your temporary license.

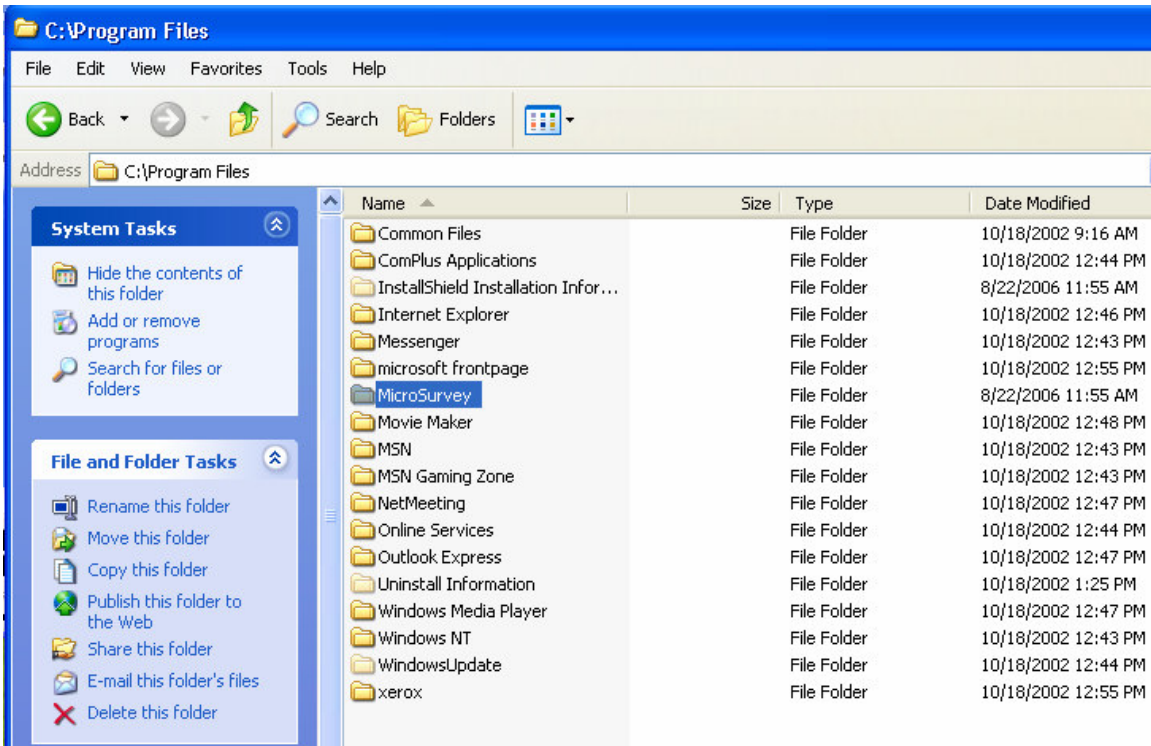
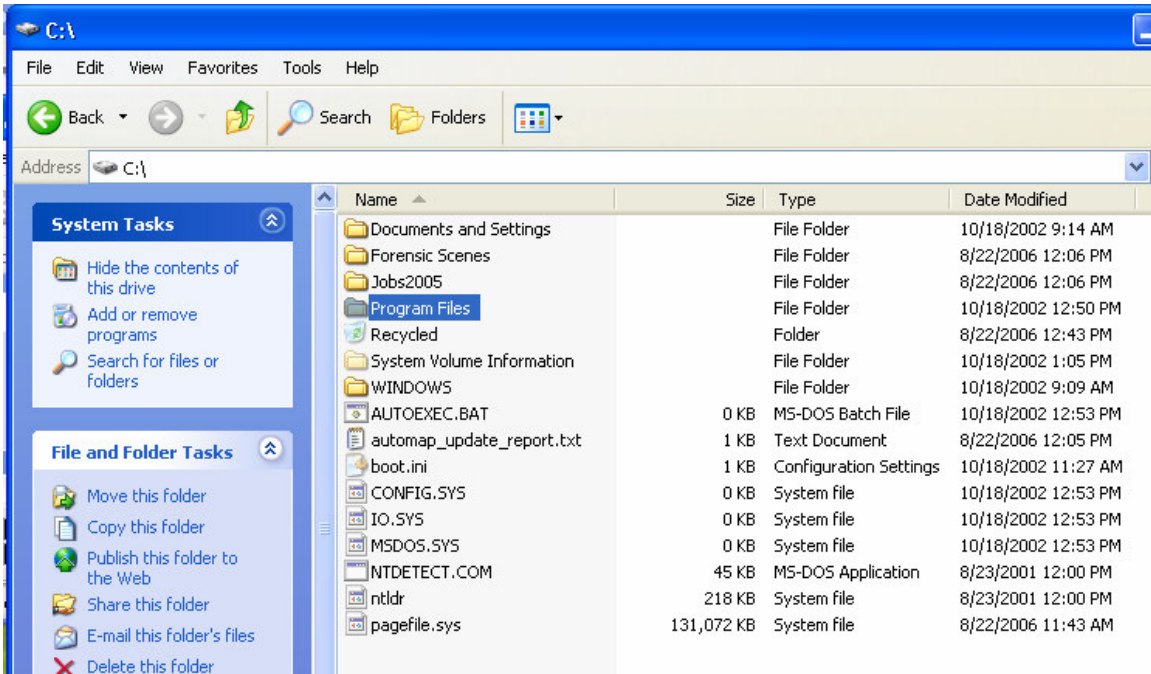


Copy the temporary license file by right-clicking the file and selecting “Copy.”

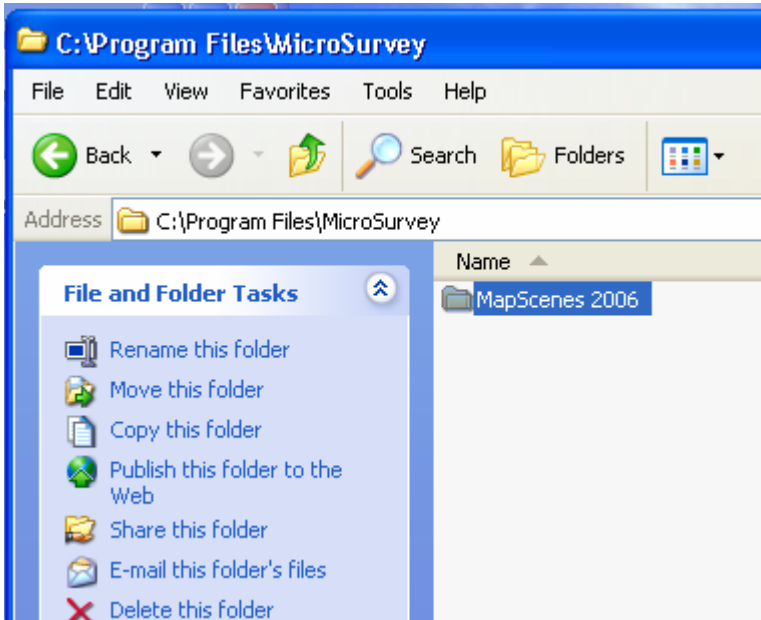


Now you will need to browse to the new location for the license. We will put it in the Mapscenes program folder. The typical location is C:\Program Files\Microsurvey\Mapscenes 2006. Open “My Computer” and follow the steps to the Mapscenes folder:

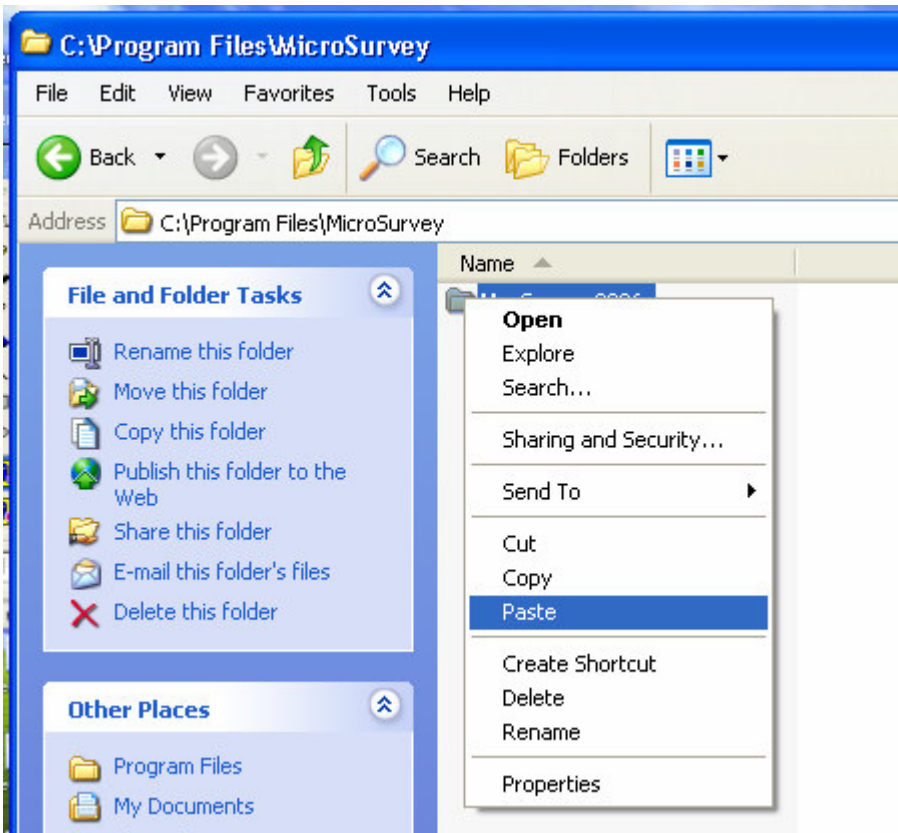




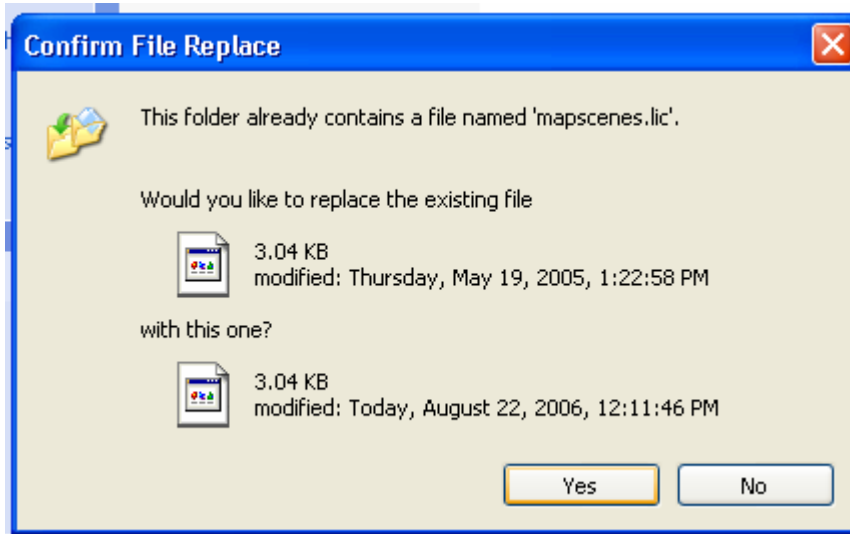
Highlight the Mapscenes Program Folder:



Right click on the Mapscenes 2006 folder and select "Paste" as shown below:



If all is well you will be prompted to confirm replacing the license. Click on “Yes” to proceed.



- Close up “My Computer.” Now you should be able to run Mapscenes in fully licensed mode.
- Please ensure that you remove the temporary license from the USB Memory Device, Floppy or Network location you were using to ensure that it doesn't interfere with future license transfers.